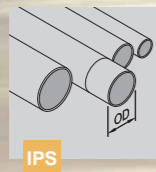




Installed quickly & easily, AusPress Press-Fit is the preferred method for installing stainless steel pressure pipework.

- Easily adapt to other systems,
- Stocked in Australia,
- 316 stainless steel standard.
- Mill finish.

Our AusPress IPS range is developed specifically to suit existing imperial pipe size systems with the installation advantages of press-fit.



What Pipe Size Do I Use?

Imperial pipe sizing, schedule 5 & 10 stainless steel pipe can be used with AusPress IPS fittings, available from local stainless steel pipe merchants.

Note: Fittings are available as schedule 5 only.

Ensure pipe is WaterMark approved if required.

Dimension requirements below:

D1	OD	t S5	t S10	i
1/2"	21.34mm	1.65	2.11	21
3/4"	26.67mm	1.65	2.11	24
1"	33.40mm	1.65	2.77	26
1 1/2"	48.26mm	1.65	2.77	31
2"	60.33mm	1.65	2.77	45

i = minimum Insertion Distance to be marked onto pipe.
t = wall thickness.
S5 = Schedule 5.
S10 = Schedule 10.

Advise when ordering fittings which schedule pipe is to be used.



Current approvals and certificates for AusPress Press-Fit can be downloaded from our website.



Are you using the correct ring seal? Check first!



IPS Ring Seals

Select the type for the application:

D1	EPDM	Viton
1/2"	IPS.EPDM.15	IPS.FKM.15
3/4"	IPS.EPDM.20	IPS.FKM.20
1"	IPS.EPDM.25	IPS.FKM.25
1 1/2"	IPS.EPDM.40	IPS.FKM.40
2"	IPS.EPDM.50	IPS.FKM.50

Refer to our Blucher Suitability Charts to confirm ring seal material suitability for your application.

EPDM: -20°C to +110°C
Black Supplied as standard for general use.

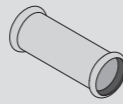
FKM (Viton): -20°C to +200°C
Green Use for oil, fuel or comp air.



IPS Coupling

Socket - Socket

Product No	D1
IPS.507.15	1/2"
IPS.507.20	3/4"
IPS.507.25	1"
IPS.507.40	1.1/2"
IPS.507.50	2"



IPS Slip Coupling

Socket - Socket

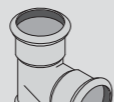
Product No	D1
IPS.508.15	1/2"
IPS.508.20	3/4"
IPS.508.25	1"
IPS.508.40	1.1/2"
IPS.508.50	2"



IPS Spigot Reducer

Pipe End - Socket

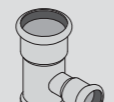
Product No	D1	D2
IPS.583.20.15	3/4"	1/2"
IPS.583.25.15	1"	1/2"
IPS.583.25.20	1"	3/4"
IPS.583.40.15	1.1/2"	1/2"
IPS.583.40.20	1.1/2"	3/4"
IPS.583.40.25	1.1/2"	1"
IPS.583.50.15	2"	1/2"
IPS.583.50.20	2"	3/4"
IPS.583.50.25	2"	1"
IPS.583.50.40	2"	1.1/2"



IPS Tee Equal

Socket Ends & Branch

Product No	D1	BR
IPS.572.15	1/2"	1/2"
IPS.572.20	3/4"	3/4"
IPS.572.25	1"	1"
IPS.572.40	1.1/2"	1.1/2"
IPS.572.50	2"	2"



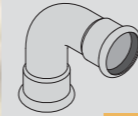
IPS Tee Reduced

Socket Ends & Branch

Product No	D1	BR
IPS.573.20.15	3/4"	1/2"
IPS.573.25.15	1"	1/2"
IPS.573.25.20	1"	3/4"
IPS.573.40.15	1.1/2"	1/2"
IPS.573.40.20	1.1/2"	3/4"
IPS.573.40.25	1.1/2"	1"
IPS.573.50.15	2"	1/2"
IPS.573.50.20	2"	3/4"
IPS.573.50.25	2"	1"
IPS.573.50.40	2"	1.1/2"



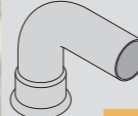
Dimensions and CAD drawings are available from Design Content or our website.



IPS 90 Bend

Socket - Socket

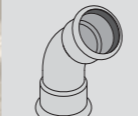
Product No	D1
IPS.568.15	1/2"
IPS.568.20	3/4"
IPS.568.25	1"
IPS.568.40	1.1/2"
IPS.568.50	2"



IPS 90 Bend

Socket - Pipe End

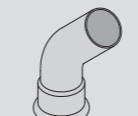
Product No	D1	D2
IPS.303.15	1/2"	1/2"
IPS.303.20	3/4"	3/4"
IPS.303.25	1"	1"
IPS.303.40	1.1/2"	1.1/2"
IPS.303.50	2"	2"



IPS 45 Bend

Socket - Socket

Product No	D1
IPS.571.15	1/2"
IPS.571.20	3/4"
IPS.571.25	1"
IPS.571.40	1.1/2"
IPS.571.50	2"

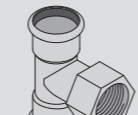


IPS 45 Bend

Socket - Pipe End

Product No	D1	D2
IPS.307.15	1/2"	1/2"
IPS.307.20	3/4"	3/4"
IPS.307.25	1"	1"
IPS.307.40	1.1/2"	1.1/2"
IPS.307.50	2"	2"

More information can be found on our website or contacting our Customer Service Centre: (08) 8374 3426

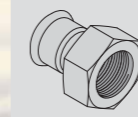


IPS FI Tee

Socket Ends - FI BSP Branch

Product No	D1	FI
IPS.578.15.15	1/2"	1/2" BSP
IPS.578.15.20	1/2"	3/4" BSP
IPS.578.20.15	3/4"	1/2" BSP
IPS.578.20.20	3/4"	3/4" BSP
IPS.578.20.25	3/4"	1" BSP
IPS.578.25.15	1"	1/2" BSP
IPS.578.25.20	1"	3/4" BSP
IPS.578.40.15	1.1/2"	1/2" BSP
IPS.578.40.20	1.1/2"	3/4" BSP
IPS.578.40.25	1.1/2"	1" BSP
IPS.578.40.40	1.1/2"	1.1/2" BSP
IPS.578.50.15	2"	1/2" BSP
IPS.578.50.20	2"	3/4" BSP
IPS.578.50.25	2"	1" BSP
IPS.578.50.40	2"	1.1/2" BSP

Refer to our website for details & suitability charts.



IPS FI Adaptor

Socket - FI BSP

Product No	D1	FI
IPS.579.15.20	1/2"	3/4" BSP
IPS.579.15.25	1/2"	1" BSP
IPS.579.20.20	3/4"	3/4" BSP
IPS.579.20.25	3/4"	1" BSP
IPS.579.25.25	1"	1" BSP
IPS.579.25.40	1"	1.1/2" BSP
IPS.579.40.40	1.1/2"	1.1/2" BSP
IPS.579.40.50	1.1/2"	2" BSP
IPS.579.50.40	2"	1.1/2" BSP
IPS.579.50.50	2"	2" BSP



IPS MI Adaptor

Socket - MI BSP

Product No	D1	MI
IPS.576.15.15	1/2"	1/2" BSP
IPS.576.15.20	1/2"	3/4" BSP
IPS.576.15.25	1/2"	1" BSP
IPS.576.20.20	3/4"	3/4" BSP
IPS.576.20.25	3/4"	1" BSP
IPS.576.25.25	1"	1" BSP
IPS.576.25.40	1"	1.1/2" BSP
IPS.576.40.40	1.1/2"	1.1/2" BSP
IPS.576.50.40	2"	1.1/2" BSP
IPS.576.50.50	2"	2" BSP



IPS Adaptor Flange

Socket - Flange

Product No	D1	FL
IPS.575.15A	1/2"	ANSI
IPS.575.20A	3/4"	ANSI
IPS.575.25A	1"	ANSI
IPS.575.40A	1.1/2"	ANSI
IPS.575.50A	2"	ANSI
IPS.575.15E	1/2"	Table E
IPS.575.20E	3/4"	Table E
IPS.575.25E	1"	Table E
IPS.575.40E	1.1/2"	Table E
IPS.575.50E	2"	Table E

ANSI supplied as 'Raised Face' standard.

Other types & sizes available on request.



IPS End Cap

Socket End

Product No	D1
IPS.332.15	1/2"
IPS.332.20	3/4"
IPS.332.25	1"
IPS.332.40	1 1/2"
IPS.332.50	2"

© 2016 Blucher Australia Pty Ltd

Check our website for the current version of this chart.

This document is only to be used as a guide and may be updated at anytime without notice.

We accept no responsibility for any errors contained or implied in this document.

