

Installing Press-Fit

We offer hire, purchasing and servicing for our Press Tools.

Start to install quicker...

Blucher Press-Fit is installed easily & quickly using a Press Tool to form a permanent 'M' profile pressed joint between tube and fitting.

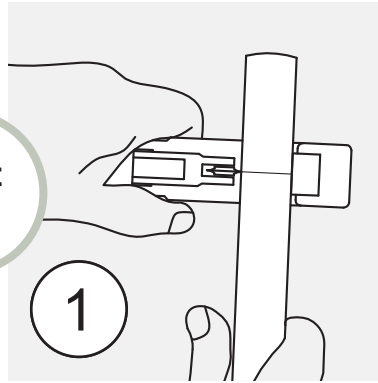


Start here

Check for suitability...

Both the piping material (eg 316 stainless steel) and the elastomer (eg rubber ring seal) must be checked if suitable for the possible fluids and exterior environments.

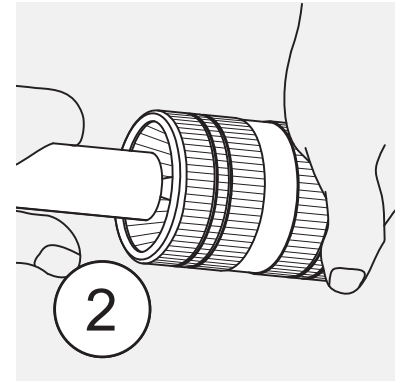
If in doubt, ask us!



Cut to Length

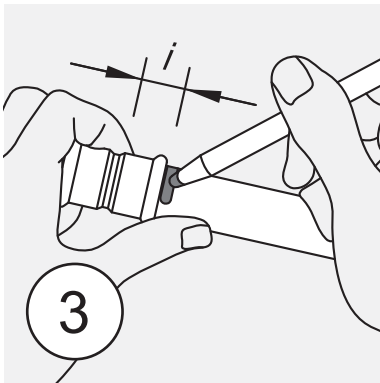
Cut the tube at right angles using a tube cutter or fine tooth saw.

Note: Using the same cutting tool on different metals can lead to corrosion (eg steel then stainless).



Deburr Tube

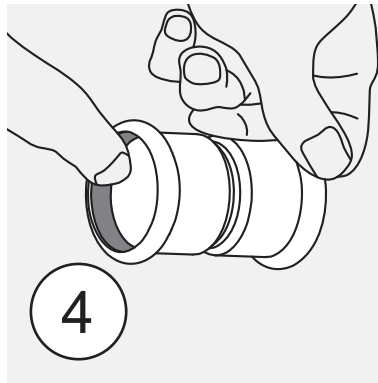
Deburr both inside & outside edges of tube to prevent damage to the ring seal of the fitting.



Mark the Insertion Depth

Measure or use a depth gauge to mark the insertion depth (socket depth) onto the tube end.

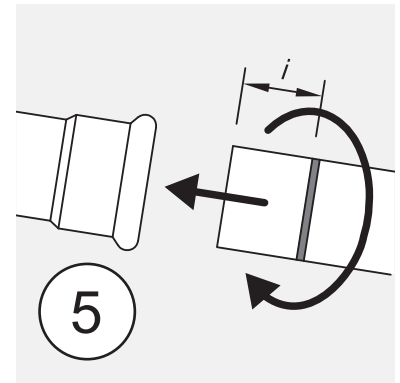
This is a visual quality control mark to ensure the tube is fully inserted.



Inspect Fitting & Ring Seals

Check that the rubber ring seal is:

- The correct material type (colour) of seal is used.
- The seal is not damaged.
- Both fitting & seal are free of debris.



Join the Tube & Fitting

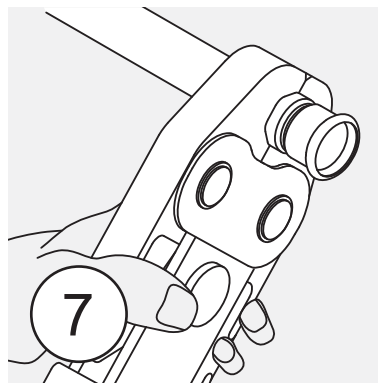
Insert the tube into the fitting press socket, turning slightly until it reaches the previously marked insertion depth.

Soapy water can be used if joining is difficult.



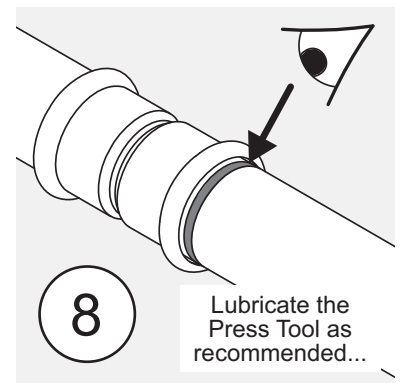
Press Tool Selection

Select the correct press tool, jaw or collar to suit the fitting dimension and application pressures.



Press the Join

Open the press tool jaw, align with the press socket and start the Press Tool to join the fitting & tube.



Check & Complete

Visually inspect the pressed fitting & that the insertion mark is aligned with the end of the socket.